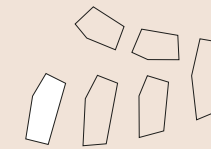


HAUS 6 / WOHNUNG 6.0.4  
EG / 4 ZIMMER

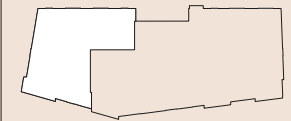
Lageplan



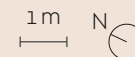
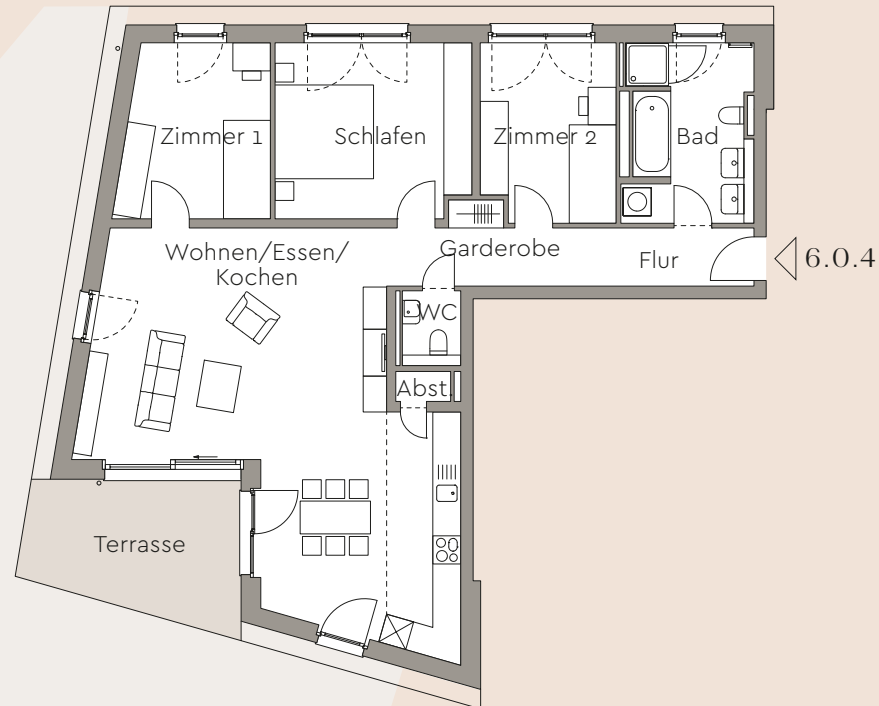
Schladererstraße

Albert-Hugard-Str.

Lage im Gebäude



SNR Garten 6.0.4  
ca. 126 m<sup>2</sup>



| Raum                | Wohnfläche                        |
|---------------------|-----------------------------------|
| Wohnen/Essen/Kochen | 48,90 m <sup>2</sup>              |
| Schlafen            | 15,50 m <sup>2</sup>              |
| Zimmer 1            | 11,50 m <sup>2</sup>              |
| Zimmer 2            | 10,80 m <sup>2</sup>              |
| Flur                | 3,60 m <sup>2</sup>               |
| Garderobe           | 6,90 m <sup>2</sup>               |
| Bad                 | 9,50 m <sup>2</sup>               |
| WC                  | 1,60 m <sup>2</sup>               |
| Abstellraum         | 0,70 m <sup>2</sup>               |
| Terrasse            | 10,40 × 0,5 = 5,20 m <sup>2</sup> |

**Gesamtwohnfläche** ..... ca. 114,20 m<sup>2</sup>